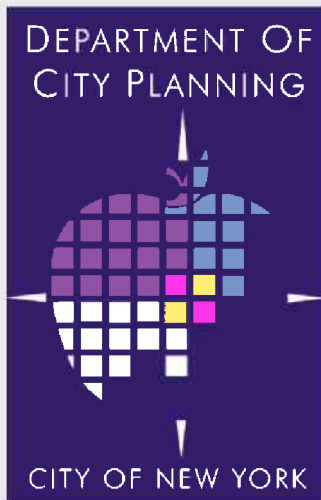


Immigrant Snapshot of New York City



CONFERENCE ON IRREGULAR MIGRATION

January 22, 2010

**JOSEPH SALVO
POPULATION DIVISION**



**Cities with Largest
Populations: 1950 and 2008**

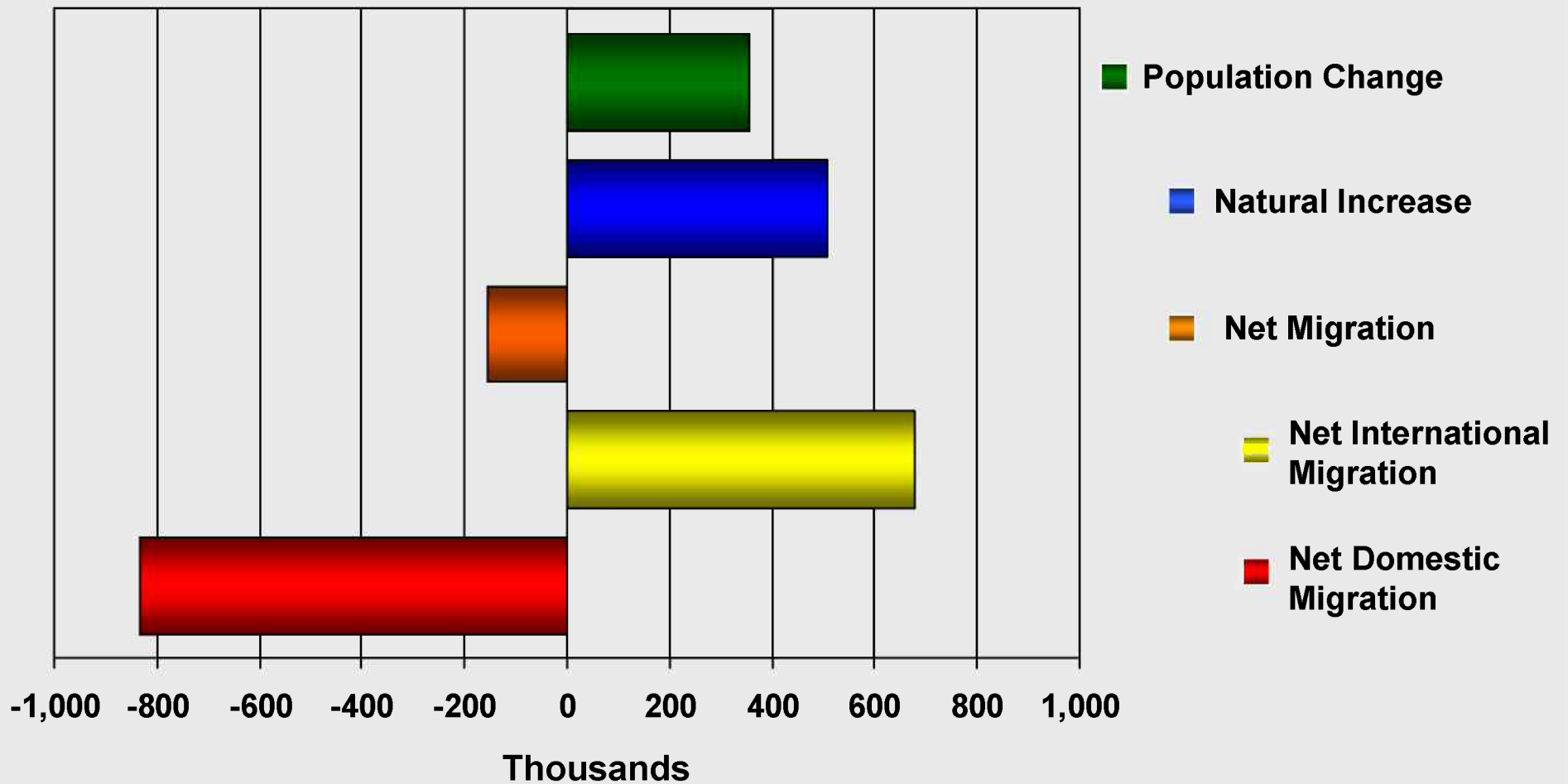
Top U.S. Cities in 1950, Growth Between 1950 and 2008


Rank		City	Population			2008 Percent Foreign-born
1950	2008		1950	2008	% Growth	
1	1	New York City, NY	7,891,957	8,363,710	6.0	36.4
2	3	Chicago, IL	3,620,962	2,853,114	-21.2	21.4
3	6	Philadelphia, PA	2,071,605	1,447,395	-30.1	10.5
4	2	Los Angeles, CA	1,970,358	3,833,995	94.6	39.4
5	11	Detroit, MI	1,849,568	912,062	-50.7	4.9
6	20	Baltimore, MD	949,708	636,919	-32.9	5.9
7	41	Cleveland, OH	914,808	433,748	-52.6	4.6
8	52	St. Louis, MO	856,796	354,361	-58.6	6.9
9	27	Washington, DC	802,178	591,833	-26.2	13.2
10	22	Boston, MA	801,444	609,023	-24.0	26.9



The Role of Immigration in Population Change

Estimated Components of Population Change New York City, 2000-2008

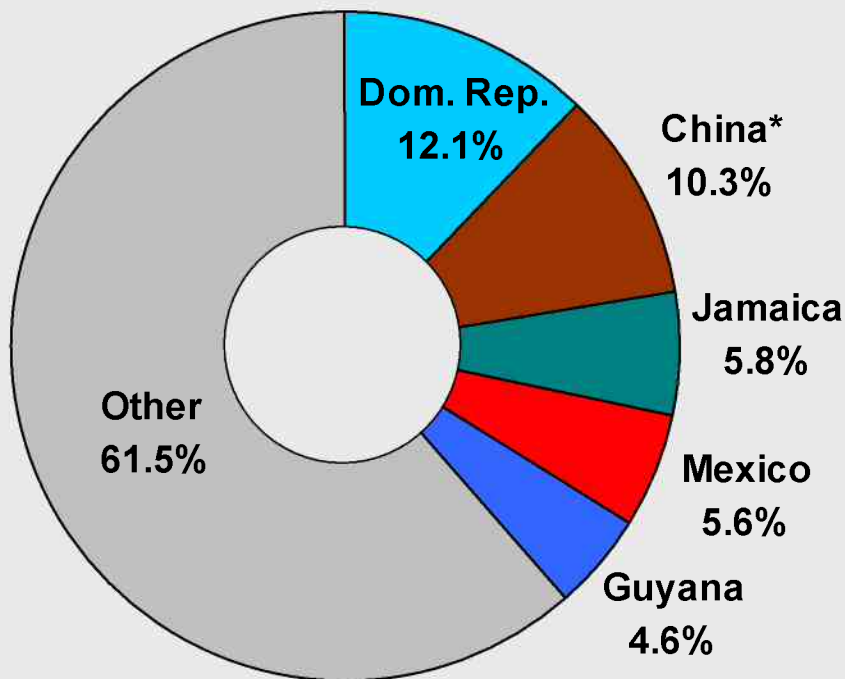




The Foreign-Born Population

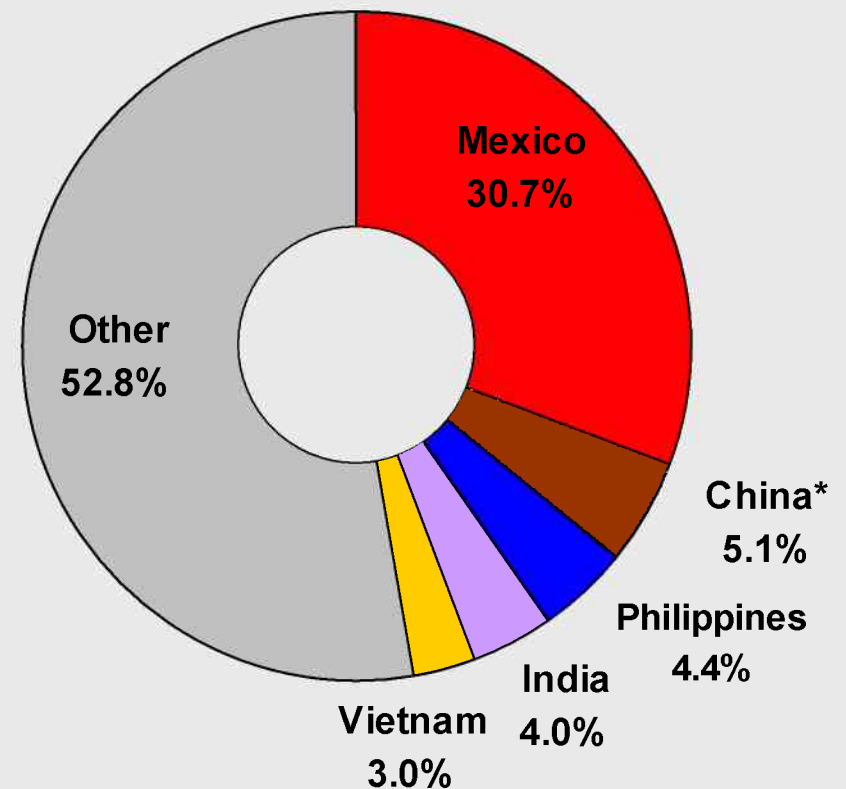
Top Countries of Birth for the Foreign-born New York City and United States, 2006

New York City



Total = 3,029,084

United States

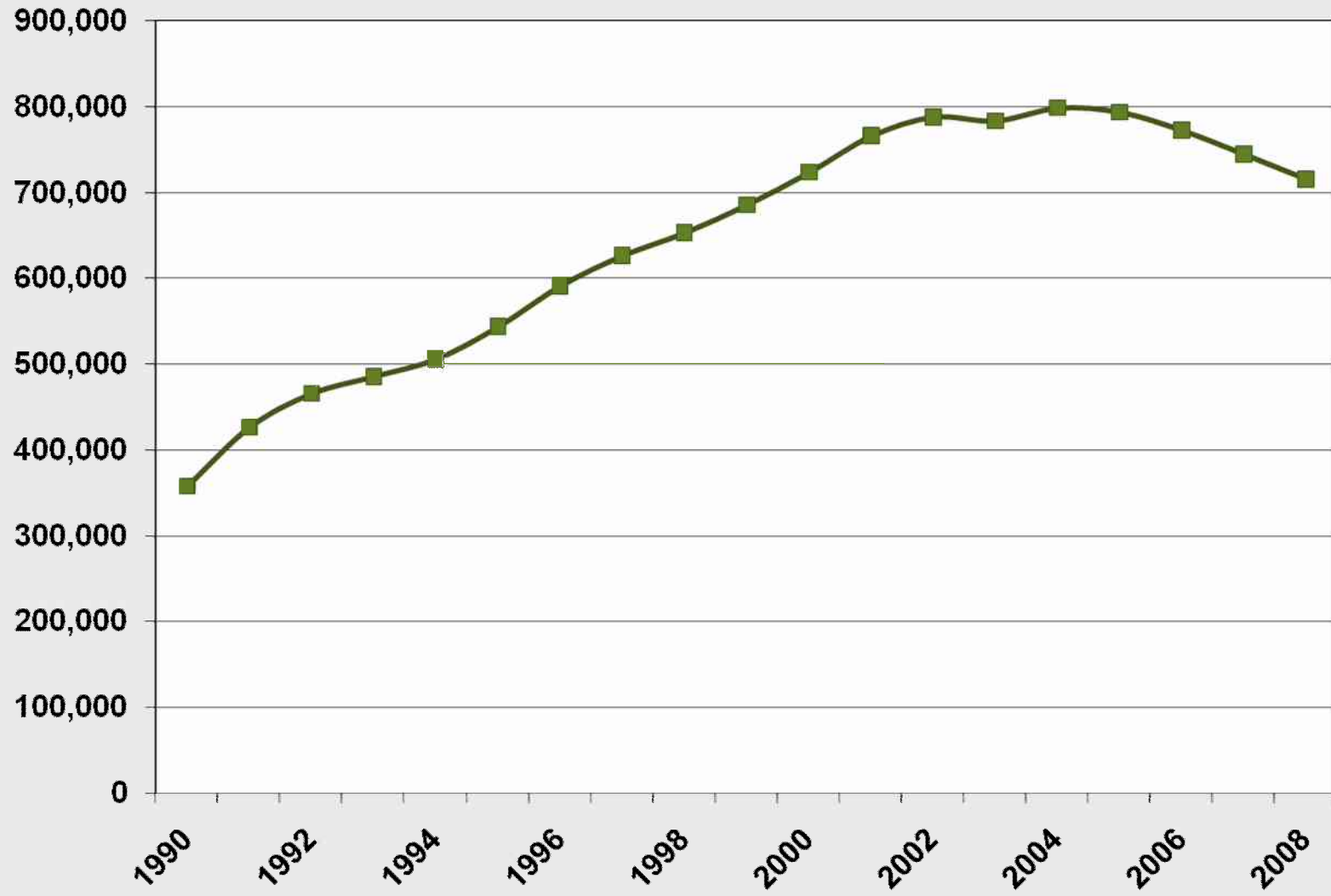


Total = 37,547,315

*Includes Mainland China, Hong Kong and Taiwan

Source: 2006 ACS Full Sample
Population Division, NYC Dept. of City Planning

Unauthorized Immigrants New York State 1990-2008



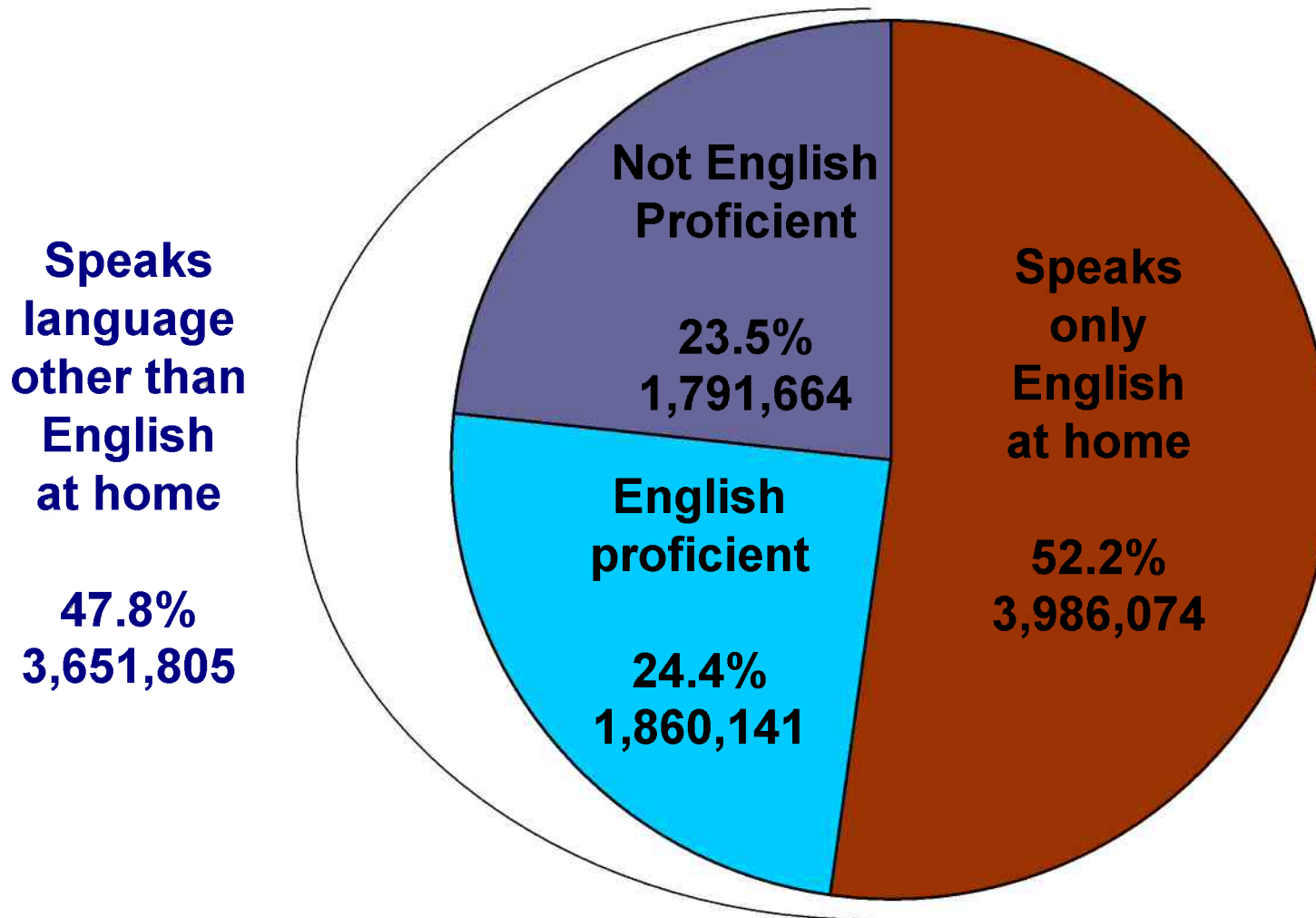
Source: Robert Warren, Unpublished data

Total Births and Births to Foreign-born Mothers New York City, 2007

	<u>Number</u>	<u>Percent</u>
Total births	122,727	100.0
Foreign-born mothers	64,948	52.9
China*	8,330	6.8
Mexico	8,180	6.7
Dominican Republic	7,510	6.1
Jamaica	3,247	2.6
Ecuador	3,015	2.5
Guyana	2,285	1.9
Trinidad & Tobago	1,842	1.5
Bangladesh	1,663	1.4
Haiti	1,431	1.2
Russia	898	0.7
Ukraine	738	0.6
Uzbekistan	484	0.4

*Includes Mainland China

Figure 8. English Language Ability of Persons Ages 5 and Over in New York City, 2006



Total: 7,637,879

Source: 2006 ACS
Population Division, NYC Dept. of City Planning

Table 5. New York City's Limited English Proficient Population by Nativity and Language, 2006

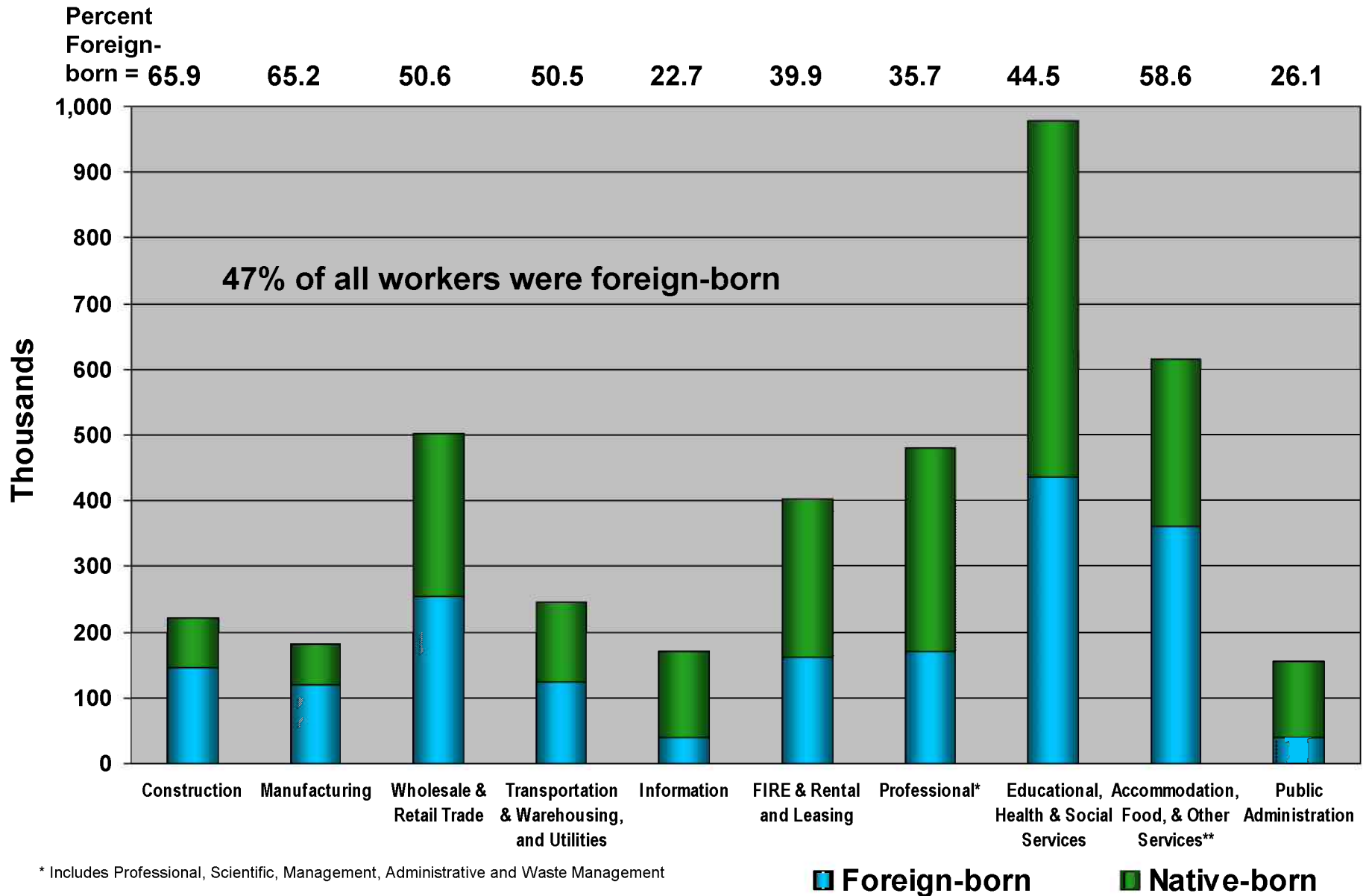
	<u>Number</u>	<u>Percent</u>
Total LEP	1,791,664	100.0
Native-born	294,603	16.4
Foreign-born	1,497,061	83.6
Top LEP Languages		
1 Spanish	910,264	50.8
2 Chinese	256,613	14.3
3 Russian	121,104	6.8
4 Korean	53,281	3.0
5 Italian	41,132	2.3
6 French Creole	38,115	2.1
7 Bengali	30,500	1.7
8 Polish	27,261	1.5
9 French	26,130	1.5
10 Yiddish	24,875	1.4

Table 6. Selected Socioeconomic Characteristics of New York City's Top 10 Immigrant Groups, 2006

	Total Population	% Limited English Proficient	Education		Poverty and Income	
			% High School Graduate	% College Graduate	Poverty Rate	Household Income
Total, New York City	8,214,426	23.5	78.6	31.9	17.2	\$45,800
Native-born	5,176,287	6.4	84.3	37.2	18.0	\$50,000
Foreign-born	3,038,139	49.7	72.2	25.9	15.8	\$41,000
Dominican Republic	378,384	73.4	56.8	12.6	25.2	\$26,000
China	303,462	78.4	62.0	22.8	18.6	\$40,800
Jamaica	174,861	1.5	76.0	17.5	11.1	\$47,000
Mexico	169,572	86.5	47.1	6.0	23.5	\$35,000
Guyana	142,946	1.1	73.7	13.9	11.6	\$50,000
Ecuador	128,623	78.2	53.8	11.6	14.5	\$40,000
Trinidad and Tobago	99,596	0.9	79.7	16.3	10.4	\$44,800
Haiti	91,571	46.8	79.5	21.0	10.4	\$45,180
India	74,476	39.0	84.6	49.4	14.1	\$61,200
Colombia	73,809	69.9	74.0	19.5	11.6	\$41,000

Source: 2006 ACS PUMS
Population Division, NYC Dept. of City Planning

Figure 9. New York City's Industry Groups by Nativity, 2006



* Includes Professional, Scientific, Management, Administrative and Waste Management

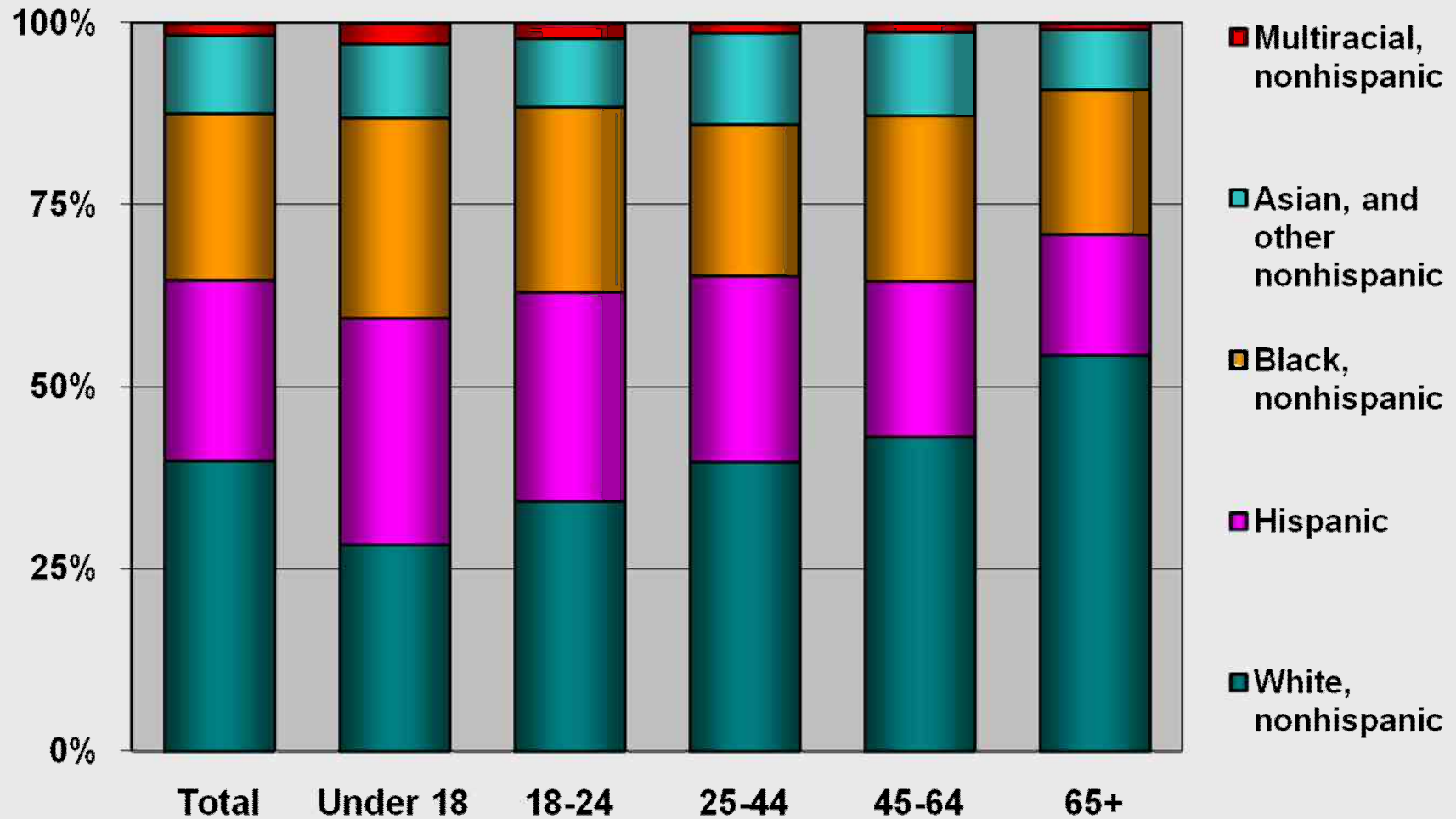
** Includes Arts, Entertainment, Recreation, and Other Services (Except Public Administration)

Source: 2006 ACS. Population Division, NYC Dept. of City Planning



Race and Hispanic Origin

Race/Hispanic Origin by Age New York City, 2005-2007



A stylized globe with a grid pattern is centered in the background. The globe is composed of a grid of squares in various colors including pink, light blue, yellow, and white. Behind the globe, a colorful unicorn head is visible, featuring a pink horn and a purple mane. The entire scene is set against a light gray background.

WEB SITE

WWW.NYC.GOV/PLANNING